



LUMINA
EDGE LIGHT

LUMINA 100^{D/S}

Lumina 100 Edgelight is an EDGELIT, lightbox that can be used single or double sided as required.

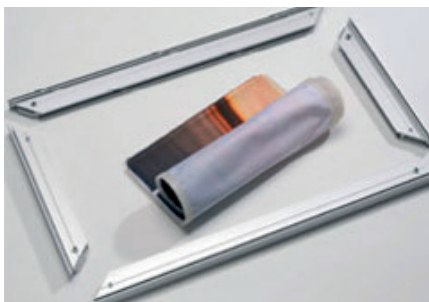
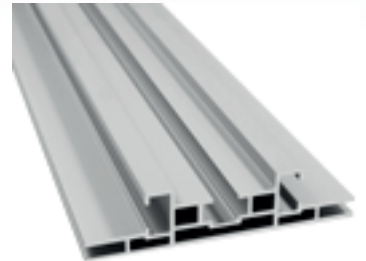
It can freestand on feet, be suspended with cables or actually built into an existing structure.

All the LEDs, drivers and all electrics are mounted to two internal edges of the internal frame underneath the fabric image and can illuminate across a gap of 3000mm.

Lumina 100 accepts push fit fabrics. It can be built to almost any bespoke size and is supplied either complete or in sections for re-assembly on site. The benefit of this edge lit unit is that it can be completely flat packed and is a more economical way of illuminating two sides of a lightbox.

The 100mm deep profile is supplied with an anodised aluminium finish, however, we can also powder coat to any RAL colour.

All lightboxes utilise a 24 volt LED system that is safety tested before despatch and a certificate will be supplied. They will also have a unique serial number in case of issues in the field.



DPI UK Ltd Unit 25 Sycamore Road, Castle Donington DE74 2NP
01332 228150 / sales@dpi-uk.com | www.dpi-uk.com

Creativity.Framed